

# WAREHOUSE FOR LEASE

4816, 4818, & 4822 HENDRON ROAD  
Groveport, Ohio 43125



## Property Overview

*Industrial space for lease near Southeast Franklin County*

- Gently used warehouse space available from 5,500 S.F. up to 11,000
- Masonry Block constructed in 2004 on 2.36± acres.

**Lease Rates \$2,300 per month for 5,500 SF plus utilities & trash removal**

**Call**

**David Miller**

**614-488-1900 ext. 12**

**Cell: 614-496-5615**

[dmiller@metropolitanholdings.com](mailto:dmiller@metropolitanholdings.com)

## PROPERTY STATISTICS

### Total Available SF

4816 = 5,500 s.f.  
4818 = 5,500 s.f.  
4822 = 5,500 s.f.

### Total Building Size

33,000 SF

### Ceiling Height

18' minimum

### Total # of Docks

1 Dock per suite

### Total # of Drive-ins

1-12x14 per suite

### Electrical Service

3-phase; 200 amp

### Zoning

Light Industrial

### Warehouse Lighting

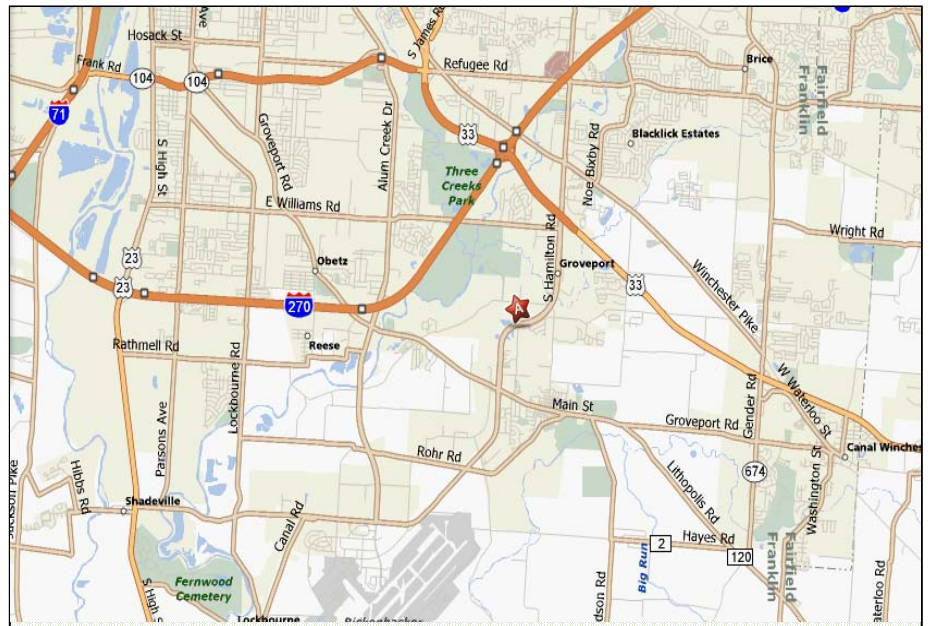
Metal-halide

### Parking Facilities

1.5/1,000

### HVAC in Warehouse

Natural Gas

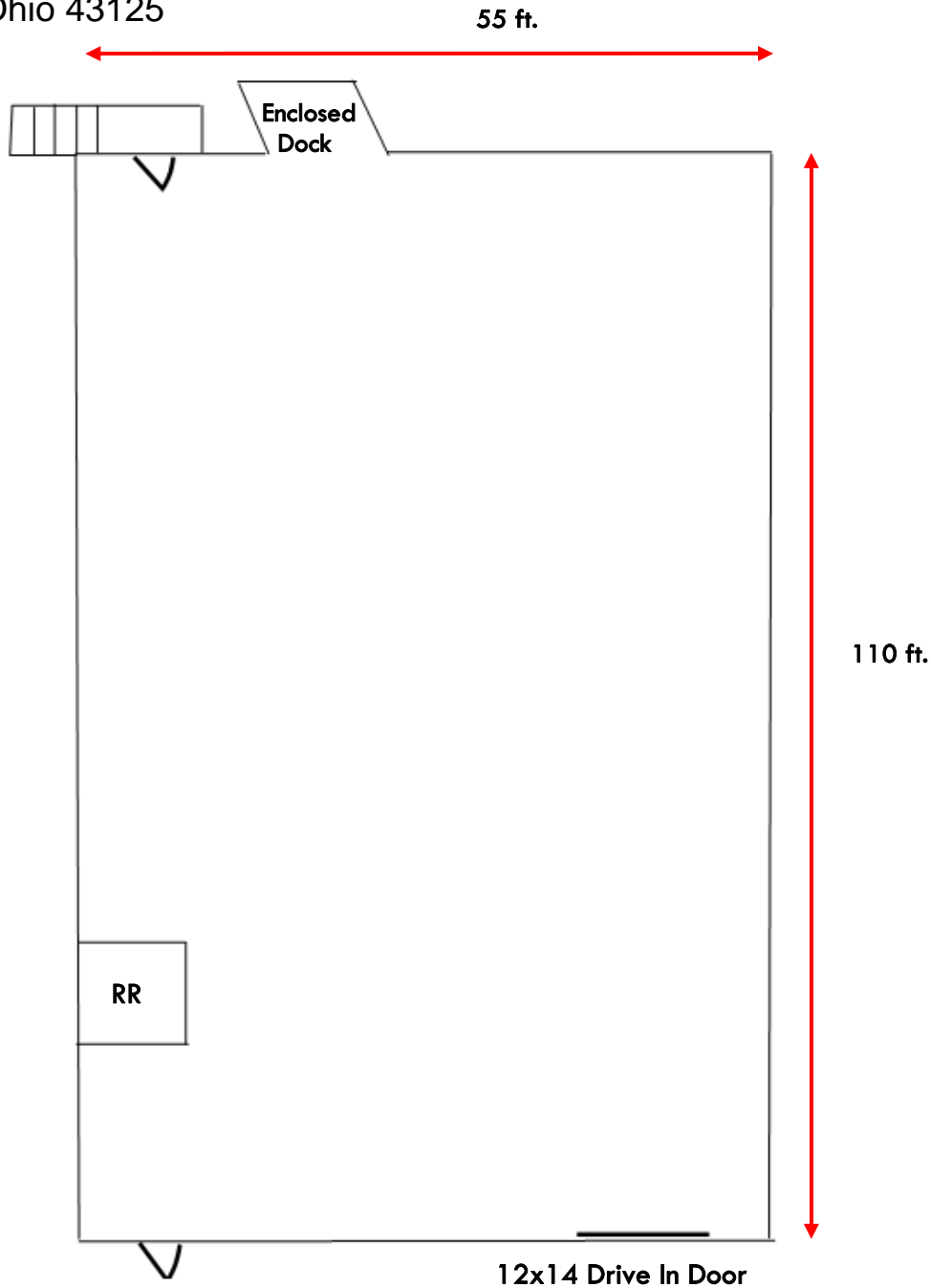


METROPOLITAN HOLDINGS, LIMITED  
1500 W. 3<sup>rd</sup> Avenue, 4<sup>th</sup> Floor, Columbus, Ohio 43212  
T: (614) 488-1900 F: (614) 488-1905

**METROPOLITAN**  
HOLDINGS  
*places for people*

# WAREHOUSE FOR LEASE

4816 HENDRON ROAD (4818 & 4822 SIMILAR)  
Groveport, Ohio 43125



## Features

- (2) 80% Reznor Gas ceiling heaters per suite
- Insulated walls & ceiling
- Water & sewer included in rent

All information furnished regarding the property for sale, rental or financing is obtained from sources deemed reliable. No representation is made to the accuracy thereof and is submitted subject to errors, omissions, change of rental price or other conditions, prior sale, lease or financing, or withdrawal without notice. Metropolitan Holdings, Limited represents the Seller/Lessor in this transaction and as such owes all duties and obligations thereto.

**METROPOLITAN HOLDINGS, LIMITED**  
1500 W. 3<sup>rd</sup> Avenue, 4<sup>th</sup> Floor, Columbus, Ohio 43212  
T: (614) 488-1900 F: (614) 488-1905

**METROPOLITAN**  
HOLDINGS  
*places for people*